

# Thrive!

Health Partnership Clinic News

## Mark your Calendar



OUR ANNUAL

## Opening Doors Luncheon Benefit

will be

**Thursday,  
April 20, 2023**

at the  
Embassy Suites Hotel/  
Olathe Conference  
Center.

**For more information  
about sponsorships,  
call Heather McKinney,  
Development Director,  
at 913-276-7012, or  
hmckinney@hpcks.org.**

## Clinic Welcomes First Refugee

After traveling more than 5,644 miles, Alex, a 19-year-old Ukrainian refugee, is now calling Overland Park, Kan. home. His aunt and uncle, Yelena and Oleg Stadnik, and their 29-year-old son, Sasha, along with the Kansas City Ukrainian community, has welcomed him with open arms. And so has Health Partnership Clinic (HPC).

Alex is just the first of many displaced refugees HPC is expected to treat in the coming months. The clinic has partnered with two primary refugee resettlement agencies—International Rescue Committee (IRC) and Catholic Charities of Northeast Kansas to provide refugees with general medical exams, including immunizations and evaluation of referral needs beyond the clinic walls.



Alex was seen by Kare Lyche, MD, a Family Practice physician at the clinic, in July.

“After all the difficulties the refugees have endured, we are grateful at Health Partnership to be able to contribute in a small way to help with their transition in the States,” Dr. Lyche says. “It’s a real privilege to make sure their health care, which has likely been less of a priority with all the dangers they were facing, is finally being addressed.”

CEO Amy Falk, says, “As a Federally Qualified Health Center (FQHC), our mission is to work with partner agencies and ensure the needs of our community are met—and that includes refugees, immigrants and others. Our ultimate goal is to facilitate the entry of refugee arrivals into ongoing health care and establish a primary care medical home.”



Continued on page 2



## Alex's Journey

When war broke out in February 2022, Alex was attending a university in Kiev, Ukraine and decided to return home to his family in Odesa. After monitoring the dire situation, the family left their home and crossed into neighboring Romania to seek safety. From there, they migrated to Israel.

"I have parents, a brother and a sister," Alex explains. "Our final destination to Israel was challenging for my family, living in a single room apartment and adjusting to the high-cost of living." After much deliberation, it was decided that Alex should migrate to the United States, where he has a cousin in New York and several relatives in Kansas. On June 4, Alex boarded a flight bound

for New York City with only a backpack of clothes, personal belongings and a cellphone. After a short visit, he arrived in Kansas City on June 8.

"My immediate goal is to continue my education in computer science," he says. "Being independent and helping my home country of Ukraine and our people are very important to me." Now with a work permit and social security card, his goal is to enroll at Johnson County Community College for the next semester.

While acclimating to American lifestyle and culture, getting a driver's license, searching for an affordable car and finding a job tops his to-do list. Like most 19-year-olds, he enjoys biking, swimming, jogging and listening to music. But he and his U.S. family spend much of their free time on the phones with state and government agencies attempting to navigate uncharted waters related to the refugee program, assistance programs and medical coverage options.

Asked about how he feels to be on U.S. soil, he reflects. "There

are no sirens, I feel safe here, and I can begin to have a normal life again. It was horrible living under the threat of missiles and the constant sirens. I'm grateful for everyone who has helped me." Thanks to social media and his cell phone, he is in regular contact with his parents, siblings and friends, who are scattered across many countries, including some who have remained in Ukraine.

"We are here to give Alex all the support he needs to be successful," Yelena says. "The outpouring of support from Congregation Beth Shalom, Jewish Vocational Service, Catholic Charities, friends, neighbors and even strangers, who have supported Stand with Ukraine KC, a humanitarian nonprofit organization, has been overwhelming and humbling."

Oleg adds, "The KC community has really stepped up to help Alex and many other refugees. This whole process has opened our eyes to all the services available in the area. I wasn't even aware of Health Partnership Clinic—and I've lived in Johnson County for 25 years, but it has been a great resource for us."

## CLINIC PROVIDES MEDICAL EXAMS FOR REFUGEES



To help meet the growing number of refugees resettling in the Kansas City metro area, HPC has partnered with International Rescue Committee (IRC) and Catholic Charities to provide general medical exams. Refugees who access our services are connected to a provider, given immunizations and are evaluated for referral needs, with help from Catholic Charities.

A refugee is someone who has been forced to flee his or her country due to persecution, war or violence. At the end of 2021, the total number of people worldwide who were forced to flee their homes due to conflicts, violence, fear of persecution and human rights violations was 89.3 million. Refugees come from around the globe including Ukraine, Afghanistan, Democratic Republic of the Congo, Myanmar, Sudan, Syria, Somalia and multiple other nations who are using Kansas City as a portal to a new start in the United States.

# HPC Launches Hypertension Initiative

A new program, launched in November 2021, aims to educate and reduce the impacts of hypertension among patients seen at HPC.

Hypertension, more commonly known as high blood pressure, impacts nearly 50 percent of U.S. adults. Its presence increases patients' risk for heart disease and stroke, which can be debilitating, if not fatal.

According to Lee Champion, MSN, FCN, RN, Clinic Director/Risk and Compliance Officer, the goal is to help patients experiencing uncontrolled hypertension, defined as a blood pressure reading of 140/90 or more. Such readings are often the result of not only genetics, but lifestyle choices including smoking, poor diet, or lack of exercise. With the goal of bringing their readings under control, the staff provides patients with diet and fitness counseling; a free device for measuring blood pressure at home; and medicine management guidance, as needed.

Known as “the silent killer,” hypertension often goes undetected and may only be diagnosed or observed during a routine physical exam. Patients skipping those exams are especially at risk. Our team recommends individuals to see a provider on an annual basis. **The clinic is accepting new patients by calling 913-648-2266.**

To date, more than 70 patients have already participated in the initiative. Individual success will come when a patient measures under the 140/90 threshold. For those not in the program, or until a patient-participant “graduates,” the team stresses the importance of measurement and adherence. “It’s always a good idea to self-measure at the pharmacy or elsewhere to ‘know your normal’ and get checked out if it’s reading higher,” Lee adds.







# Clinic celebrates 30 years

Thirty years ago, Johnson County adults—who were uninsured and needed acute and chronic disease care—typically accessed care through emergency rooms. This type of episodic care created a financial drain on both patients and hospitals and more importantly, did not provide continuous and comprehensive care. Hospital and community leaders banded together and opened Health Partnership of Johnson County in 1992 to fill that gap. This “free” primary care clinic provided limited adult acute and chronic disease care with volunteer providers and staff.



Over the last 30 years, the clinic, which is now known as Health Partnership Clinic (HPC), has continued to grow to meet the changing needs of Johnson County and the surrounding area. The clinic has provided an estimated 390,000 patient visits since initially opening its doors.

- ▶ In 2012, the clinic received Federally Qualified Health Center designation paving the way to offering pediatric and adult medicine and dental services on a sliding fee discount in Olathe, Kan.



- ▶ Additionally, the Paola clinic opened—serving Miami County, and the clinic’s dental outreach program began.
- ▶ In 2013, the clinic launched its behavioral health services, in 2015, this model of care was expanded to Franklin



County and in 2016, the Shawnee Mission Clinic on the campus of AdventHealth Shawnee Mission, opened.

- ▶ Since then, the clinic launched a school-based clinic at Merriam Park Elementary School in Merriam, Kan. and in 2021 relocated services to Shawnee Mission West High School in Overland Park, Kan. The clinic also provides Substance Abuse and Medication-Assisted Treatment Services.



- ▶ During the intervening years, the clinic has added staff and services to continue to meet the needs of the communities it serves. HPC is ranked among the top 20 percent of health centers nationally for best overall clinical performance (2021 and 2022).



# of health and hope in 2022

As the only federally qualified health center in Johnson, Miami and Franklin Counties, we are proud to provide quality, affordable and accessible health care to the uninsured, those underinsured and individuals with insurance. “Many residents have received care at one of our clinic sites over the years, and they have seen many changes in staff, structure and services,” says Amy Falk, CEO. “We thank all those who have trusted HPC to provide care for the last 30 years, and we look forward to serving and expanding services well into the future.”

This milestone is one that has not been easily reached. The dedicated efforts of staff, volunteers, providers and by the Board of Directors laying plans to keep HPC a viable, growing entity in the future will ensure our success. Amy adds, “We hope our patients, staff and community members take the opportunity to remember the past struggles and successes, celebrate where we are today, but also look forward with bright optimism about what we have yet to achieve.”



The clinic has been celebrating throughout the year with various activities. These include the clinic’s annual Opening Doors fundraising luncheon in April (page 6), staff activities including t-shirts, all-staff photo and a time capsule, a coloring and video essay contests for school partners and a community open house in August.



*To learn more, visit our website at [hpcks.org/HPC30](https://hpcks.org/HPC30).*

**Help us continue our mission  
for the next 30 years and donate today.**

You can use the enclosed envelope,  
text “ESSENTIAL” to 53-555, or go online at  
[hpcks.org/give-back/](https://hpcks.org/give-back/).

*Thank you for your consideration.*



The clinic formed a 30th Celebration Ad Hoc Committee, chaired by Catherine Rice, Vice President of Marketing and Outreach. Committee members include Carolina Barraza, MA-Shawnee Mission; Maureen Caro, APRN, FNP-C, Medical Provider; Christina Cook, Dental Hygienist; Judy Janes, Volunteer; Darren Odum, Board Member, Billie Reese-Turner, Billing/Patient Services, Director; Debbie Sparks, Development/Marketing, Manager; and Tom Wilhauk, Executive Assistant.



# Clinic celebrates 30 years at benefit luncheon

**Raises funds for uninsured children and adults**

Health Partnership marked 30 years of improving health, impacting lives together at the annual Opening Doors benefit luncheon in April. Thanks to generous sponsors and donors, the clinic raised more than \$67,000 which will help provide medical, dental and behavioral health care to uninsured children and adults in Johnson, Franklin and Miami counties. The clinic provides more than \$3 million of uncompensated care annually.

Christel Bell with FOX4 Kansas City served as the emcee. Earlier in the month, Christel visited the clinic and learned about the clinic's mission. In addition, Jim Terrones, board member, provided an inspirational moment and Tierney Grasser, Board Chair, and Amy Falk, CEO, presented two annual awards. AdventHealth MidAmerica Region received the Founders Award, and Shelby Rebeck, MSN, BSN, RN, former Director of Health Services, at Shawnee Mission School District (SMSD), received the Leadership Impact Award.

Guests also viewed a Birthday Shoutout video from our community partners and an educational video about the clinic as well as enjoyed a testimonial from Carolyn Tortorici, Overland Park, Kan. Carolyn is a foster parent who has utilized the clinic since 2013. She and her husband, Joe, have brought nine foster children to the clinic through the years. She shared that she liked taking children to the clinic because their foster kids see children like themselves here, and that would not be true in a private dental or medical



▲ A huge thank you to our event sponsors.

office. She adds, "It is great to not always stand out as 'different'." She also noted the exceptional services the clinic provides and the genuine care and professionalism of all the staff.

As part of its 30-year celebration, the clinic and its partners sponsored a video and coloring contest. The winning videos of Shawnee Mission West High School students were premiered. The winning artwork of third grade students who attend Olathe School District Title One elementary schools was displayed.







To view the videos and coloring artwork, visit <https://hpcks.org/hpc30/#hpc30videos>.

Contest sponsors included UnitedHealthcare Community Plan, Davidson Promotional and Sunflower Health Plan.

To view more about our 30th celebration or about clinic locations and services, visit [hpcks.org](https://hpcks.org).



# #HPCSTRONG

## Partnerships in Action

- ▶ Special thanks to our caring partners including Olathe Community of Christ and Olathe North Student Council that provided homeless kits for our patients. Individuals or groups are welcome to support the clinic with Fall, Summer, COVID or Homeless Personal Care Kits by contacting Catherine Rice, VP of Marketing and Outreach, at 913-730-3680 or [crice@hpcks.org](mailto:crice@hpcks.org).



- ▶ Olathe and Shawnee Mission School Districts welcomed back our Portable Dental Outreach Team at 19 Title One elementary schools. We provided screenings and fluoride treatments to nearly 5,000 area children for the 2021-22 School Year.



- ▶ The clinic continues to provide COVID-19 vaccines, testing and test kits to the community. Hundreds of test kits have been distributed to patients, school districts, Growing Futures Early Childhood Center and area health departments. COVID personal care kits, assembled by volunteers, were distributed to the Johnson County Park Police, patients and those experiencing homelessness.

### BEYOND OUR WALLS . . .



Outreach is a key component of our mission. So far this year, we have attended more than 35 events including the Olathe School District Back to School Outreach event for low-income students,

SOS Event in Paola, Johnson County Corrections Resource Fair, Growing Futures Back to School Night and Shawnee Mission School District's First Annual Career Expo.



## A Stamp of



### Here's what patients are saying about us:

*"I have health issues that have been very scary and would have ended in possibly death if not for the affordable, caring, spectacular health care provided by HPC. Thank you!"*

*"I feel very comfortable every time I come here for my dental care. Dr. Nader (Nader Rastgoftar, DDS, and Dental Director) and Stephanie Rojas (Lead Dental Assistant) are very kind and helpful. Dr. Nader always spends time explaining the issues I have and the solutions to the causes. My family has been coming here for a long time. This is the best Dental clinic... a big thank you!"*

*"Dr. El-Halawany (Cheri El-Halawany, MD, FAAP, Pediatrician) was kind, courteous and listened to us as parents. She did not push anything on us for our child, and we did not feel pressured."*

## Behavioral Health Team Shares Self-Care Tips

Our Behavioral Health team, which includes two Behavioral Health clinicians, a psychiatric nurse practitioner, a substance abuse specialist, a psychiatrist and a resource specialist, believe



self-care is essential in today's chaotic world with an uncertain future. Self-care means taking the time to do things that help you live well and improve both your physical health and mental health. When it comes to your mental health, self-care can help you manage stress, lower your risk of illness and increase your energy. Even small acts of self-care in your daily life can have a big impact.

Here are some tips provided by the National Institute of Mental Health to help you get started with self-care:

- ▶ **Get regular exercise.** Just 30 minutes of walking every day can help boost your mood and improve your health. Small amounts of exercise add up, so don't be discouraged if you can't do 30 minutes at one time.
- ▶ **Eat healthy, regular meals and stay hydrated.** A balanced diet and plenty of water can improve your energy and focus throughout the day. Also, limit caffeinated beverages such as soft drinks or coffee.
- ▶ **Make sleep a priority.** Stick to a schedule, and make sure you're getting enough sleep. Blue light from devices and screens can make it harder to fall asleep, so reduce blue light exposure from your phone or computer before bedtime.
- ▶ **Try a relaxing activity.** Explore relaxation or wellness programs or apps, which may incorporate meditation, muscle relaxation, or breathing exercises. Schedule regular times for these and other healthy activities you enjoy such as journaling.
- ▶ **Set goals and priorities.** Decide what must get done now and what can wait. Learn to say "no" to new tasks if you feel like you're taking on too much. Try to be mindful of what you have accomplished at the end of the day, not what you have been unable to do.
- ▶ **Practice gratitude.** Remind yourself daily of things you are grateful for. Be specific. Write them down at night or replay them in your mind.
- ▶ **Focus on positivity.** Identify and challenge your negative and unhelpful thoughts.
- ▶ **Stay connected.** Reach out to your friends or family members who can provide emotional support and practical help.

*To learn more about our Behavioral Health services, call 913-730-3664.*



# & Noteworthy

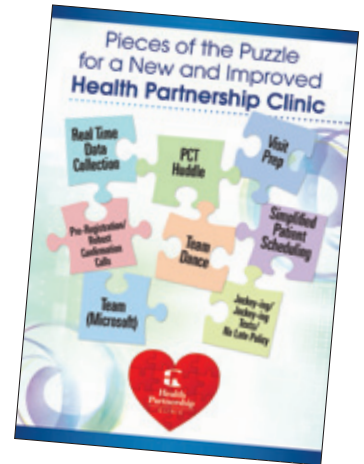


- School is in and so is our School-Based Health Clinic at Shawnee Mission West High School, which resumed operations in mid-August. The health clinic is open to Shawnee Mission School District students and their siblings, three to 20 years old, on Thursdays from 11 a.m. to 3 p.m. for in-person or virtual appointments. **To schedule an appointment, call 913-648-2266.**

Our school-based health clinic is an excellent example of how our mission extends beyond our clinic doors. Within the walls of Shawnee Mission West, we provide quality, accessible and affordable health care services, including primary, dental and behavioral health care.



Dramatic Performance Improvement (DPI) initiative with proven, best practice recommendations, coaching and staff training. The DPI team will be focusing on cycle time, productivity and TNAA (Third Next Available Appointment).



...



- In early September, CEO Amy Falk attended a Roundtable on Prescription Drugs with Rep. Sharice Davids and other health leaders at the Hen House in Olathe, Kan. Discussions focused on the new health care provisions recently passed into law related to prescription drugs, insulin, capping drug costs and inflation rebate.

...

- The clinic once again earned HRSA Health Care Program's Community Health Quality Recognition (CHQR) badges. This is a significant accomplishment, and we are proud of our staff!



CHQR badges recognize health centers, like HPC, that have made notable quality improvement



- Patient care is at the center of everything we do. This month, the clinic took an important step to ensure quality care continues to be provided at all our sites with efficiency and effectiveness.

Our team is looking at ways to improve workflow and processes to positively impact patient experience and staff satisfaction. The clinic is boosting its



# Welcome

## PROVIDERS



*Kierra Calico, MSN,  
APRN, FNP-BC,  
FNP-C  
Family Nurse  
Practitioner*



*Eva Clark, MSN,  
APRN, WHNP-BC  
Women's Health  
Nurse Practitioner*



*Thao Le, MSN,  
APRN, PMHNP-BC  
Psychiatric Nurse  
Practitioner*



*Monica Masters,  
MS, LCPC, LCAC,  
NCC  
Behavioral Health  
Clinician*



*John W. Smart,  
LCSW  
Behavioral  
Health Clinician*



*Rebecca Turner,  
MSN, APRN, FNP-C  
Family Nurse  
Practitioner*



*Joseph Wittig,  
DDS  
Dentist*

## BOARD MEMBERS



*Burnis Lance  
Community  
Member*



*John McKinney, Ed.D  
Director of Student and  
Family Services  
Shawnee Mission  
School District*



*Christi L. Zimmerman  
Director of Patient Care  
Saint Luke's South  
Hospital*

## SENIOR LEADERSHIP TEAM



*Lee Champion, MSN, FCN, RN  
Clinic Director/  
Risk and Compliance Officer*



*James L. Wetzel, MD  
Interim Chief  
Health Officer*



*John W. Smart, LCSW  
Behavioral  
Health Clinician*

achievements in the areas of access, quality, health equity, health information technology and COVID-19 public health emergency response for the 2021 Uniform Data System (UDS) reporting period.

Recognition badges received by HPC include Silver Award Health Center Quality Leader (top 20 percent of community health care centers in the nation), Access Enhancer, Advancing HIT for Quality and Patient-Centered Medical Home (PCMH).

• • •



- On a monthly basis, the clinic offers mammograms through its partnership with the Diagnostic Imaging Centers' Mobile Mammography coach to women 40-64 years old. There is no cost to patients who qualify for Early Detection Works (EDW) program.  
**To schedule an appointment, call 913-276-7098.**

# Meet Our Staff

## Gwenyth Wagner, DNP, APRN, ANP-C Adult Nurse Practitioner, Diabetes Clinic



As HPC's longest-tenured provider, Gwenyth Wagner, DNP, APRN, ANP-C, has observed an evolution at HPC that mirrors her own career. From very focused origins, both she and HPC have changed with the times to be of greater benefit to the community.

Like many, Dr. Wagner first served HPC as a volunteer. An accomplished Registered Nurse in her early career, she worked at local hospitals and university health centers prior to completing her Master of Science in Nursing in 2009 at the University of Kansas Medical Center in Kansas City, Kan. Seeking to serve those who lacked the medical care opportunities she had seen in her native Toronto, Ontario, she began volunteering at HPC in 2010—before HPC received its designations as a Medical Home and Federally Qualified Health Center.

For patients who struggled to leave their daytime jobs to receive vital health care, Dr. Wagner helped launch an evening clinic at HPC. And from 2014-2018, she took on an expanded provider role by working daytime hours several days weekly.

Balancing her teaching and practitioner interests—and having received a Doctor of Nursing Practice degree from the University of Kansas in 2014—she now directs the Adult-Gerontology Primary Care Nurse Practitioner program full-time at Mid-America Nazarene University in Olathe, Kan. She also leads HPC's High-Risk Diabetes Clinic, where she performs necessary physical assessments, orders tests and helps patients access appropriate medications. Her team, which serves patients with uncontrollable diabetes, also provides education and behavioral health services.

Helping to expand HPC's reach, she also serves as Nurse Practitioner Coordinator, connecting area school students with internship-like roles where they gain valuable clinical experience working with HPC providers to coordinate patient care. "Students get a

really great experience and a really good sense that this place has a purpose...that it's fulfilling a community need," Dr. Wagner says.

She believes that HPC will continue to have a strong community presence for as long as basic medical care is inhibited by financial and accessibility limitations. She quickly adds that HPC has risen to such challenges over the years by adding providers in growth areas, emphasizing quality-focused initiatives and sustaining a positive work environment.

Dr. Wagner has been married to her childhood sweetheart for 36 years. They have four adult sons, two daughters-in-law and six grandchildren. In her "spare time," she likes to walk, crochet, knit, arrange family events and play with her grandchildren.

As we celebrate our 30th anniversary, HPC recognizes and appreciates Dr. Wagner, not only for her dedication to the HPC mission of serving patients regardless of their ability to pay, but for fostering a culture of care among the staff and the providers of tomorrow.

---

## Mayra Bocanegra Billing and Patient Services Manager



A friendly face who's familiar to patients, Mayra (pronounced Myra) Bocanegra now serves as HPC's Billing and Patient Services Manager. In this new and expanded role, she resolves patients' billing and payment issues and gets them the appointments they need with our dedicated team of

healthcare providers. Mayra also works with various community organizations such as Johnson County Department of Corrections and Safehome to schedule their clients for services and serve as a resource.

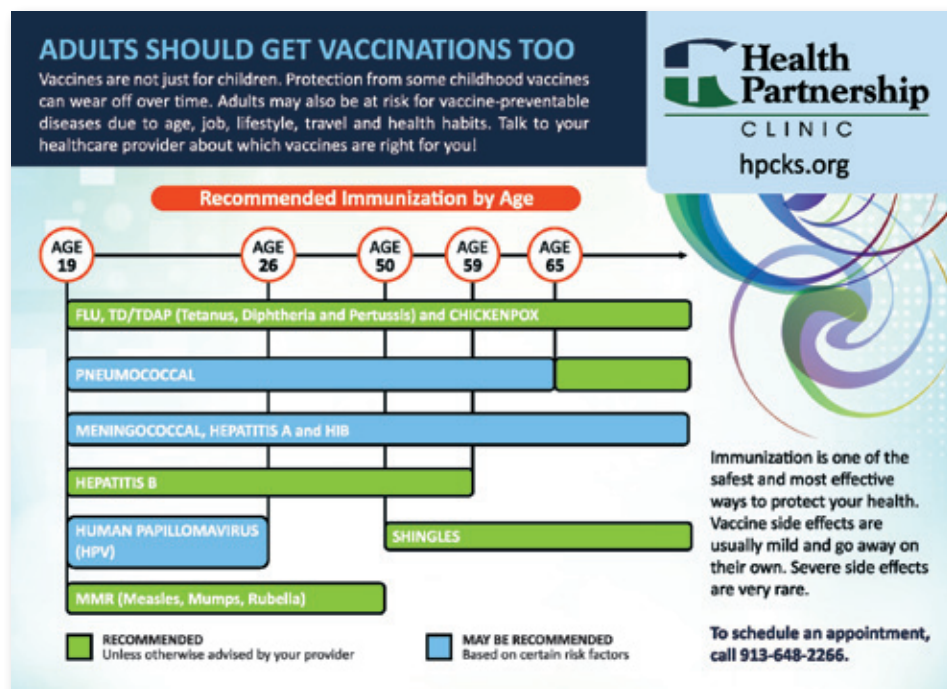
Mayra joined HPC in June 2019 as a Patient Services Representative and quickly progressed to a lead position just four months later. She held that role until becoming Patient Billing Coordinator in February 2020. In October, she was promoted to Billing and Patient Services Manager.



Given HPC's mission to serve community members regardless of their ability to pay, Mayra has become many patients' chief problem-solver. "What I like about working here is helping our patients overcome pain or financial hardship," she says. She submits claims to insurers for payment, manages disputes, assists uninsured patients and resolves in-kind service bills when patients are referred to external providers. As needed, she reviews accounts and arranges payment plans, always sensitive to the economic challenges raised by the pandemic and ongoing inflation.

A native of Los Angeles, Calif., Mayra moved to Bonner Springs, Kan., sight unseen in 2009 after her husband, an electrician, came seeking new opportunities, better schools for their children and a change from West Coast life. She joined HPC after years as a stay-at-home mom, putting her prior medical office training learned in California to good use. Now with three children, ages 20, 17 and nine, the family owns a home in Lawrence, Kan. and enjoys bonding over Mayra's home-cooked meals.

Mayra also enjoys bonding with her patients, saying, "They come here because they need help, and I love feeling their gratitude. Being able to help them get an appointment or resolve a bill, especially when they speak only Spanish, makes me feel good, like I did something good today."



## HPC provides free vaccines to qualified adults

Thanks to a grant from the Kansas Department of Health and Environment, HPC initiated a program on July 1 to substantially build vaccine awareness, education and inoculations. Costs for many vaccines including hepatitis, pneumonia and tetanus are now covered under the program for HPC's sliding fee eligible patients and homeless adults aged 19 and older; costs for patients up to age 18 are covered under legacy programs. Flu shots will be offered and covered this fall.

Though long trusted and successful in treating or preventing diseases like polio, diphtheria and measles, vaccines have come under increased suspicion in the COVID era—even earlier and especially among minority or underserved populations often seen at HPC. The Adult Vaccine Initiative aims to reverse those trends and restore confidence in all vaccines. One goal is for people to see vaccines as harmless and necessary to help prevent ongoing disease and fatalities. This program is offered at our Olathe, Paola and Ottawa locations.

Since the program's formal inception this summer, more than 30 free vaccines have been given. The Adult Vaccine Initiative will continue until the grant dollars are disbursed.

*To learn more or make an appointment, call 913-648-2266.  
For a free adult vaccine magnet, call 913-730-3680.*

## 2021 DONORS

July 1, 2020 - June 30, 2021

AdventHealth  
American Cancer Society  
Bruce and Janet Baker  
Martin Bennett  
Sue Bond  
Karole Bradford  
City of De Soto  
City of Edgerton  
City of Gardner  
City of Leawood  
City of Lenexa  
City of Merriam  
City of Mission  
City of Olathe  
City of Olathe, Mayor's Children's Fund  
City of Overland Park  
City of Prairie Village  
City of Roeland Park  
City of Shawnee  
City of Spring Hill  
City of Westwood  
Irene Caudillo  
Emily Cortes, DDS

Dr. Emily Day and Mr. Geoffrey Day  
Frederick O. DeSieghardt  
Ed Eilert  
Jeff and Carol Lynne Ellis  
Michael and Amy Falk  
Brent E. Finley, MD  
Jean Francis  
Dr. Dolores Furtado  
David Graham, MD  
Timothy and Tierney Grasser  
Greater Kansas City Community  
Foundation – COVID-19 Response  
and Recovery  
Growing Futures  
Fred Hall, DO  
Robin Rollins Harrold  
Health Forward Foundation  
Mary E. Heininger  
Dr. and Mrs. Glenn Hodges  
Johnson County Government  
Kansas Department of Health  
and Environment  
Kansas City University of Medicine  
and Biosciences  
Teddy and Denise Kelly

Michael S. Klein, DDS  
Kristin Kubes  
Dan Leong  
Rose Mary Litewski  
Mike and Jody McCamon  
Jim and Brenda McLaughlin  
Media Wise, Inc.  
Dr. and Mrs. John Murphy  
Jeanne Nicholas  
Marsha Nighswonger  
Gary Nye  
Olathe Health  
Oppenstein Brothers Foundation –  
Commerce Bank Trustee  
Overland Park Regional Medical  
Center Staff  
Overland Park Rotary Club  
Roger and Kim Peck,  
in honor of Colin Peck  
Susanna Peck  
Dave and Sheri Potter  
Reach Healthcare Foundation  
Shelby Rebeck, MSN, BSN, RN  
Catherine Rice  
Martha Ross

Saint Luke's Health System  
Dave and Rebecca Scott  
Shaner Family Fund  
Debbie Sparks  
Mayor Artie Stuteville  
Triggerfish Corporation  
Jennifer Troutman  
United Healthcare Community Plan –  
Kansas  
United Way of Greater Kansas City  
Kenneth and Barbara Wallace  
Sheri Wood  
Julia Woods, MSN, RN, NE-BC

### In-Kind Donations

Classy Care Group, LLC  
Davidson Promotional Products, Inc.  
Direct Relief  
GFI Digital  
Heart to Heart International  
Hechler Orthodontics  
Mazuma Credit Union  
Mission Southside  
Parents as Teachers – Olathe  
Anne Simpson

## 2022 DONORS

July 1, 2021 - June 30, 2022

AdventHealth  
AdventHealth Medical Staff  
AdventHealth Ottawa  
Aetna Better Health of Kansas  
Martin Bennett  
Blue Cross Blue Shield of Kansas City  
Blue Gurus  
Sue Bond  
Julie Brewer  
Bridge Builder Tax and Legal Services P.A.  
David Brucker  
Laura Maria Canelos-Ramon  
City of De Soto  
City of Edgerton  
City of Gardner  
City of Leawood  
City of Lenexa  
City of Merriam  
City of Mission  
City of Olathe  
City of Olathe, Mayor's Children's Fund  
City of Overland Park  
City of Prairie Village  
City of Roeland Park  
City of Shawnee  
City of Spring Hill  
City of Westwood  
Mary Ellen Clark  
Cole Design & Production  
Emily Cortes, DDS  
Creative Planning  
Doug and Barbara Cusick

Davidson Promotional Products, Inc.  
Whitney Benakis Debourge  
Diagnostic Imaging  
Ed Eilert  
Jeff and Carol Lynne Ellis  
Shereen Ellis  
Peter Enko  
Michael and Amy Falk  
Brent E. Finley, MD  
FNBO  
Jean Francis  
Freedom Bank  
Ann French  
Dolores Furtado  
Scott and Dana Gold  
Robin and Dave Harrold  
Heartland RADAC  
Neal and Cindy Heckman  
Mary E. Heininger  
HFG Architecture  
Sheri Hilger  
Michael D. Hockley  
Dr. and Mrs. Glenn Hodges  
Brian and Deliece Hofen  
Holmes Murphy & Associates, LLC  
Therese Horvat  
Johnson County Government  
Kansas City Medical Society Foundation  
Kansas City University of Medicine  
and Biosciences  
Kansas Department of Health  
and Environment

Kansas Gas Service  
Michael S. Klein, DDS  
Lakemary Center  
Heather McKinney  
Brenda and Jim McLaughlin  
Sharon Morris  
Dr. and Mrs. John Murphy  
National Association of Community  
Health Centers, Inc.  
Barry and Leslee Nelson  
Charles and Carol Nigro  
Darren Odum  
Olathe Fire Department  
Olathe Health  
Olathe Public Schools  
Oppenstein Brothers Foundation –  
Commerce Bank Trustee  
Overland Park Regional Medical  
Center Staff  
Roger and Kim Peck  
Susanna Peck  
Nader Rastgoftar, DDS  
Reach Healthcare Foundation  
Catherine Rice  
Saint Luke's Health System  
Dalyn Schmitt  
Heather L. Schoonover  
Shaner Family Fund

Shawnee Mission School District  
Sunflower Health Plan  
Social Work PRN  
Debbie Sparks  
Doug Spear  
Tech Team Corp  
James Terrones  
The GoodCoin Foundation  
United Healthcare Community Plan –  
Kansas  
United Way of Greater Kansas City  
Kenneth and Barbara Wallace  
Maggie and Eric Wallace  
Whole Foods Market Community  
Giving Program  
Sheri Wood  
Write Leadership, LLC  
Cynthia Yin, OD

### In-Kind Donations

Delta Dental of Kansas  
Direct Relief  
Lynn Jenkins  
Blair Joyce  
Olathe Community of Christ  
Olathe North High School  
FACS Department  
Quality Reviews, Inc.

*thank you*

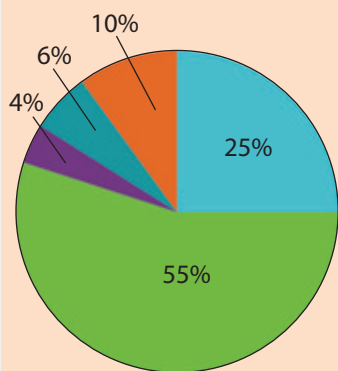


# Annual Report

## OUR FINANCIALS

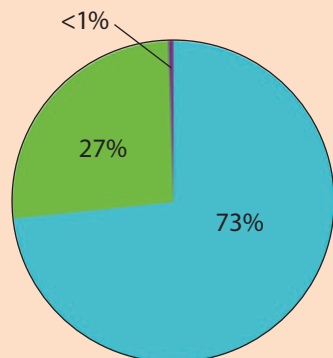
FY 2021

Revenue  
**\$8,521,520**



- Patient Services
- Federal & State Grants
- Foundation Grants
- Donors & In-Kind
- SBA PPP Loan Forgiveness

Expense  
**\$6,823,327**

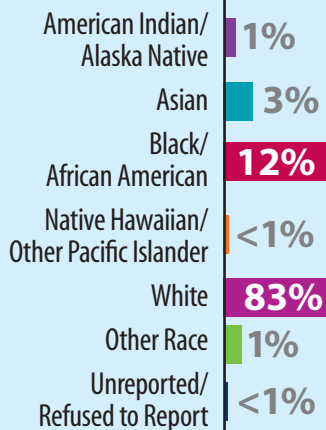


- Program Services
- Administration & General
- Fundraising

SBA PPP loan forgiveness offsets FY20 loss from use of loan vs. federal grant funds.

Audited Results

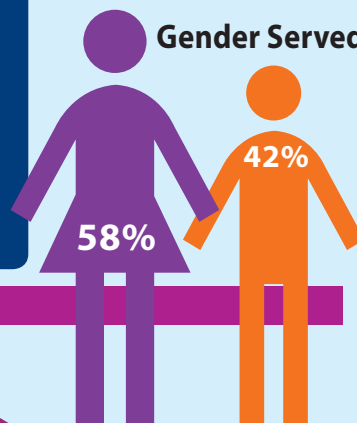
### Race



**10,109**  
patients served

**24,210**  
visits

### Gender Served

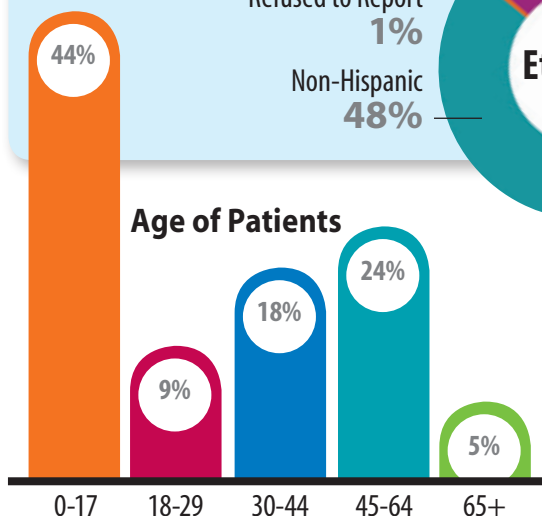


Refused to Report 1%  
Non-Hispanic 48%

### Ethnicity



### Age of Patients

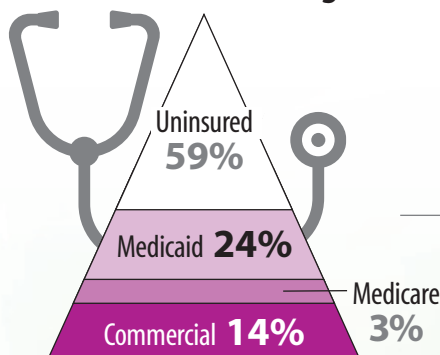


### Poverty Level

|                |     |
|----------------|-----|
| 100% and below | 34% |
| 101-150%       | 17% |
| 151-200%       | 14% |
| 200% and above | 6%  |
| Unknown        | 29% |

**65%**  
total under 200%

### Health Care Coverage



### Patient Visit by Service Type



\* Due to COVID-19, Dental Outreach was suspended.



405 S. Clairborne Rd., Suite 2  
Olathe, KS 66062  
913-648-2266  
hpcks.org

NON-PROFIT  
U.S. POSTAGE  
**PAID**  
KCMO  
PERMIT #171



United Way  
of Greater Kansas City

## Walk-Ins welcome!

### Olathe's Pediatric Walk-In Clinic

welcomes children under 18 years old  
who are sick or need care for  
minor illnesses and injuries.



The walk-in clinic is open to  
HPC patients and the community from  
**7:30 a.m. to Noon, Monday-Friday.**

**The clinic is located at  
407 S. Clairborne Rd., Ste. 104, Olathe, Kan.**

Commercial insurance and KanCare/Medicaid accepted.  
No appointments necessary! First come, first served.

*For more information, call 913-648-2266.*



#### **Olathe**

407 S. Clairborne Rd., Ste. 104, Olathe, KS 66062  
**913-648-2266**

#### **Shawnee Mission**

9119 W. 74th St., Ste. 210, Shawnee Mission, KS 66204  
*Located inside the Shawnee Mission Medical Building*  
**913-432-3334**

#### **Paola**

1604 Industrial Park Dr., Paola, KS 66071  
**913-294-9223**

#### **Ottawa**

107 S. Main St., Ottawa, KS 66067  
**913-401-2750**

#### **Overland Park**

*(School-based clinic at Shawnee Mission West High School  
for SMSD students and their siblings three and older)*  
8800 W. 85th St., Overland Park, KS 66212  
**913-648-2266**



For the latest information, visit us on facebook.  
[www.facebook.com/HPHealth](https://www.facebook.com/HPHealth) (and like us!) and at [hpcks.org](http://hpcks.org)!